

Region 8 - Drama Festival Information

Fees

Play Fees - \$275 per play

Social Fees - \$15.00 per person

Adult SDA membership - \$50.00

Student Director membership - \$10.00

Student SDA membership - \$6.00

Performances

All performances will be held at NBCHS

The student social event will be held NBCHS on

Friday, March 26 at 10:00 (Gym of Café)

The awards banquet will be held at NBCHS (Café)
at approximately 5:00 p.m. on Saturday March 27th.

Motel/Hotel/B&B and Billeting

Super 8 Motel - 446-8888

Best Canadian Motor Inn - 445-7747

Tropical Inn Hotel - 446-4700

Gold Eagle Lodge - 446-8877

Date and Time of Regional Meeting

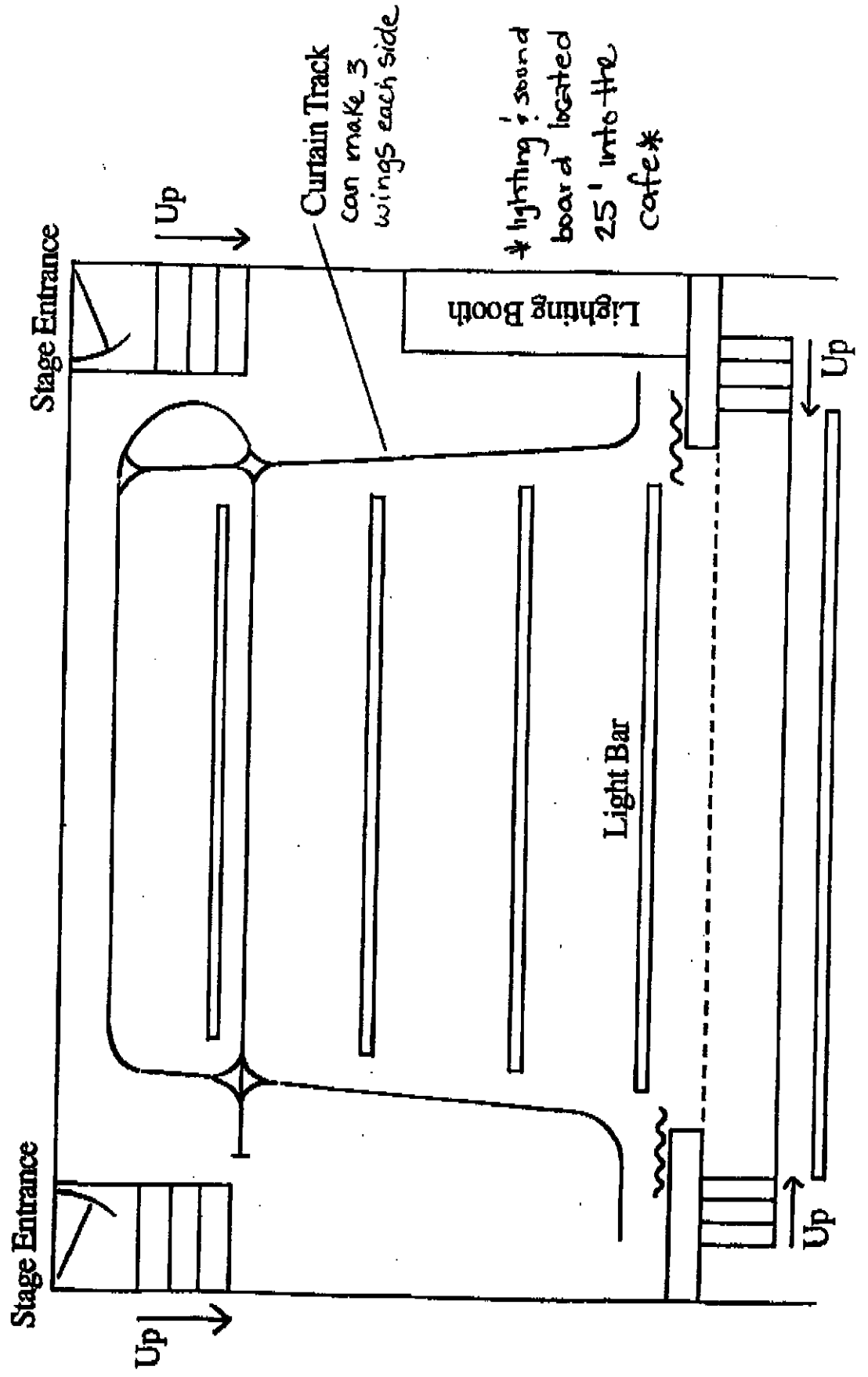
The meeting will be held Friday, March 26, at 10:00 p.m.

Awards

Awards will be given out after the banquet on Saturday March 27th.

North Battleford High School

Auditorium



Two Scene Mode

SmartFade is specifically designed to be usable right out of the box. Two Scene Mode gives you quick access to the console's basic functions. If you're pressed for time, or are anxious to put your SmartFade to use, then enable Two-Scene mode and begin lighting your show (see *Operating Modes Menu, page 5*).

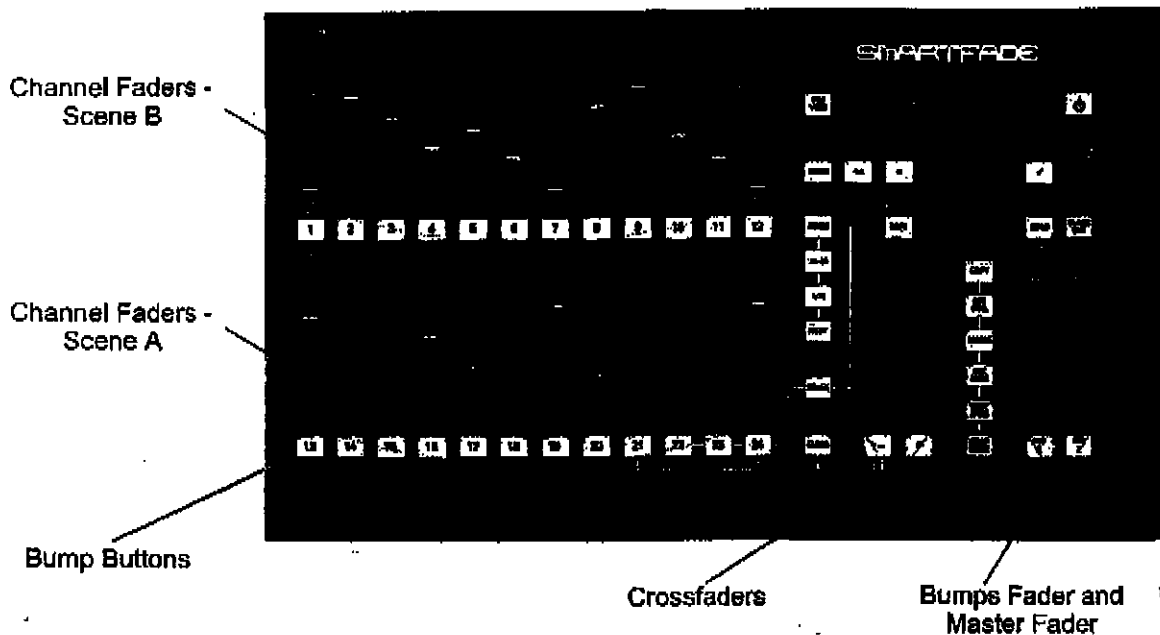
Let's get you started...

Two Scene operation provides a simple method for lighting your show. Two rows (or Scenes) of channel faders are placed one over the other. Each row is capable of controlling the same channels. Typically, one Scene is "live" and the other is "safe", meaning that one Scene will actually control the output of dimmers while the other is safe for presetting the next desired lighting look without affecting the dimmers. A pair of crossfaders (labeled A and B) allow you to fade from the levels set on one row of channel faders to the other, alternating each Scene from "live" to "safe".

Crossfading from one Scene to the next can be done manually, where the speed at which you move the crossfaders determines the speed at which the fade happens. Also, you may choose to set a fade rate, which will complete the crossfade automatically in the time you have entered (this is helpful for long crossfades that are difficult to produce smoothly by hand).

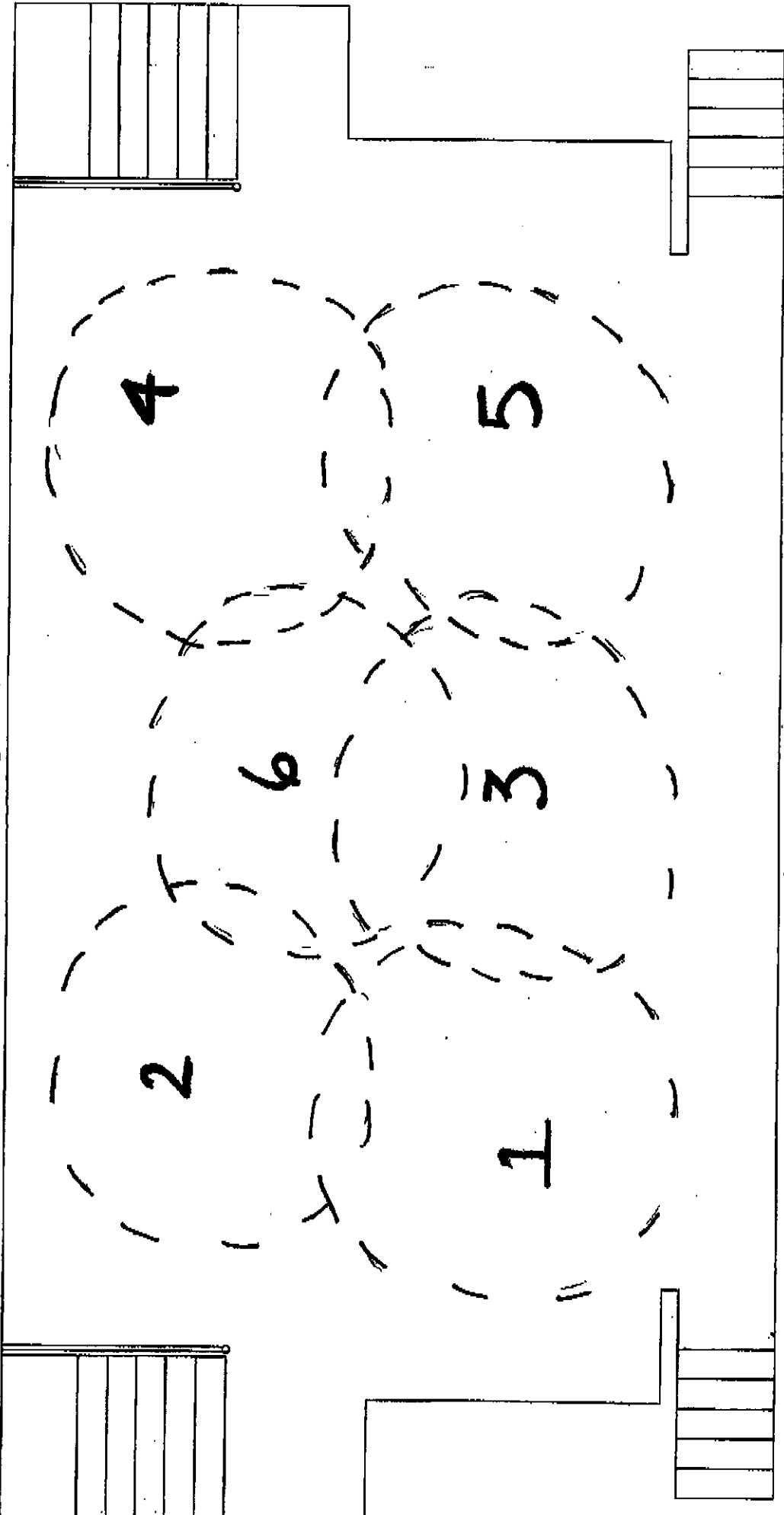
Lastly, Two Scene Mode provides the option of using a 1-to-1 patch of dimmer to channel faders (meaning that channel 1 controls dimmer 1, channel 2 controls dimmer 2, and so on) or a custom patch (see *Patch, page 14*).

Note: Custom patching must be performed in Normal mode. See *Normal Mode LCD Menu, page 38*.



STAGE BACK

STAGE FRONT



NBCHS Light and Sound Board Details

Lights

The NBCHS Lights System is commanded from a Smartfade digital system. There are two scenes, each with twenty four channels. Eight of the channels are presently being used with another channel reserved for Scoops to provide ambient light on stage if desired. The stage is divided into six zones (See lights layout) with a light in front of the stage for stairs as well as house lights. The board includes the usual crossfades, master control and bumps. Another dimmer controls the level to which the bumps activate and a dial can control the time with which fades between scenes takes place. If you have any questions call 446-3178 to contact our lights technician.

Sound

Sound Board

Behringer- Eurodesk MX 2442A

Channels 1-15 open microphone/line-ins (16 is used by the lights)

17/18 19/20 21/22 23/24 stereo inputs

Four Auxiliary Sends

Behringer- Eurodesk 1231 Graphic Equalizer

150 WATT power supply

QSC audio professional Power Amp.

RMX 1450

Sony mp3 CD/Tape player

CMT-NEZ3

Peavey XR-600B mixer amp

800 WATT (on stage)

2 stage monitors

5 microphones

Stage Snake

1-15 open (16 for lights)

4 auxiliary