

Region 6 - Drama Festival Information

Fees

Play Fees - \$20.00 per person
Social Fees - \$21.00 per person
Adult SDA membership - \$50.00
Student Director membership - \$10.00
Student SDA membership - \$6.00

Door Admittance

\$5.00 per person/per play session (rush seating)

Performances

All performances will be held in Unity Composite High School
Social event - Friday, April 16th - Evening
Awards ceremony and Banquet - held at the school in the Senior Gym on
Saturday after the last adjudication

Motel/Hotel/B&B and Billeting

Armitage House Bed & Breakfast - 228-2864
Leeson House Bed & Breakfast - 228-3809
Prairie Moon Inn & Suites - 228-3333

Date and Time of Regional Meeting

The meeting will be held Friday evening during the social event.

Unity Composite High School Drama
Drama Festival 2010 Technical Overview

The following is available for use:

Lighting: 4 par 64 flood lights with 500 watt bulbs.
3 Leko spot lights with 1000 watt bulbs
5 Fresnels
1 – 12 channel LDS dimmer pack with 12,000 watt capability.
1 Leprecaun Light console
1 follow spot with colour gels

We can light Stage Left, Centre Stage and Stage Right separately
We are working on overhead lights....but currently all lights are located out front.

Sound: 1 Audio pro 8 channel stereo mixer
2 Wireless lapel mics
2 Shure vocal mics + 3 Samson vocal mics
1 Technics Dual cassette deck, 5 pack CD player
1 laptop for music/sound FX that plugs into mixer

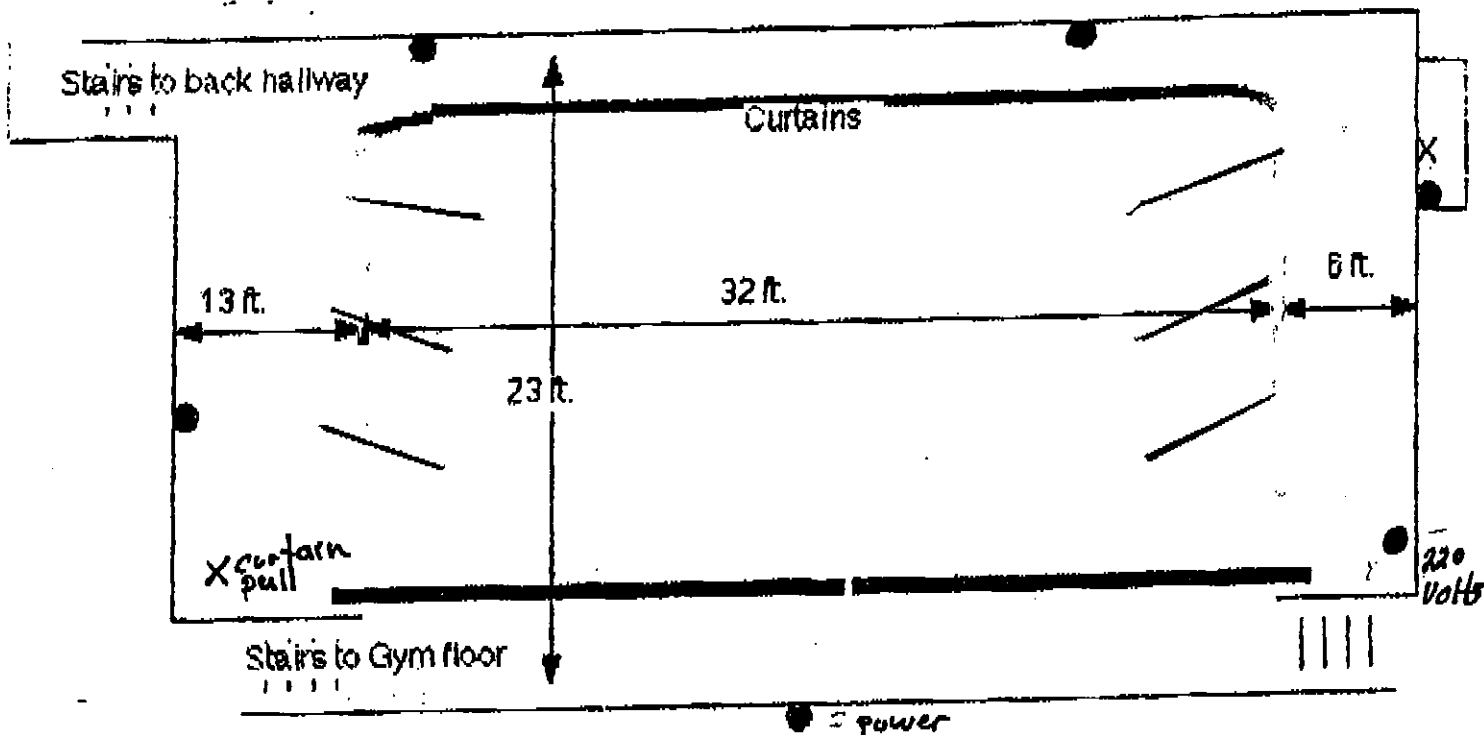
Control table will be set up approximately 30 feet into audience

*Advised to bring remote communication headsets

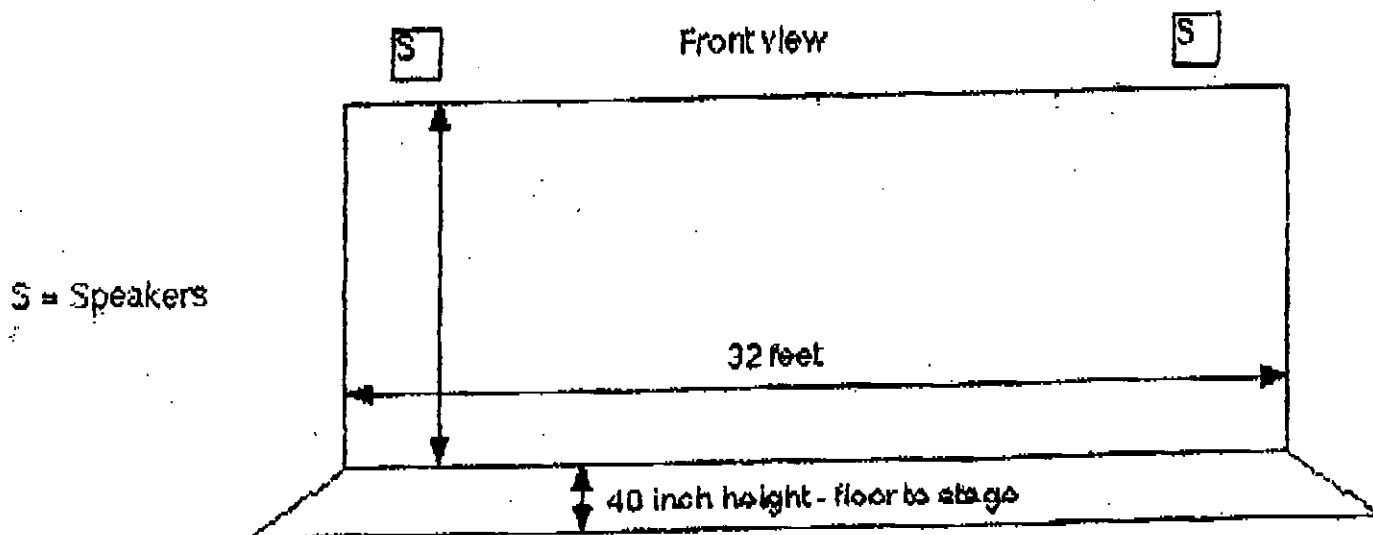
*Retractable screen located on proscenium.

U.C.H.S. Stage Diagram

Top view



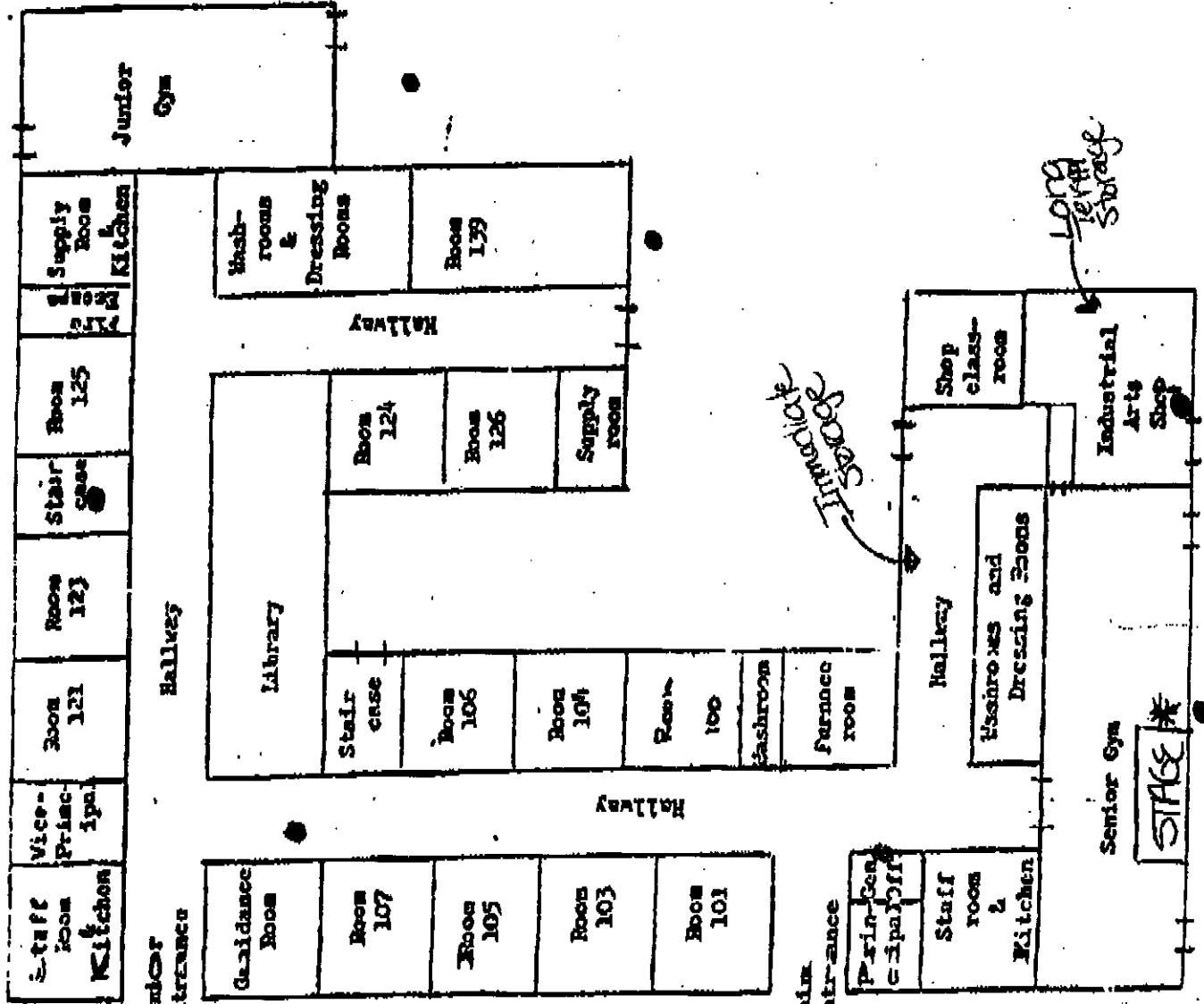
- Notes:
- 1 set of stairs that can be positioned along from of the stage
 - indicates a wall outlet for power
 - X indicates a small storage room with grand piano, but can be used for costume change or props
 - Black curtains along the back wall of the stage allowing a 3 foot walkway
 - 3 Side curtains are on tracks and can be repositioned to any angle and move about 15 feet
 - Main stage curtains provide an apron of six feet deep.
 - Backstage to front of house can be accessed via 2 stairs off the stage, or through the back hallway to the gym changerooms.



UNITY COMPOSITE HIGH SCHOOL

BASIC FLOOR PLAN

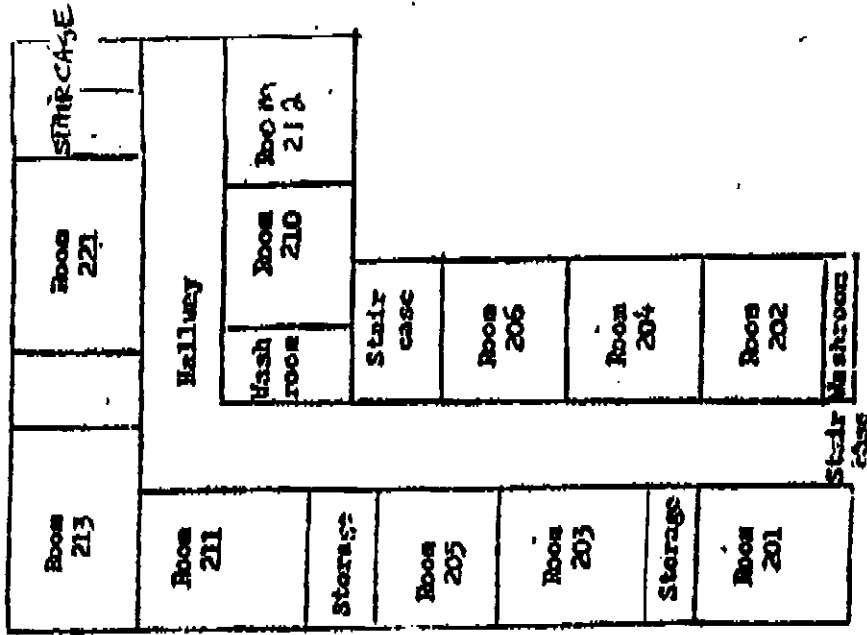
MAIN FLOOR



STAIR CASE

LONG TERM STORAGE

SECOND FLOOR E



PARKING LOT

4

LEPRECON LIGHTING CONSOLE

LM-850 PRODUCT FEATURES

CONTROL CHANNELS: 54 control channels (in 3 banks of 18) with faders, bump buttons and proportional LED display.

MASTER level

CROSSFADE auto-sequences between current and next scenes

SUB-MASTERS (A & B) assignable to any set of channels.

BLACK OUT switch

BUMP ALL switch

BUMP MODES: momentary or latched, add or solo.

SCENES: 100 Programmable preset scenes, each with it's own associated title, fade rate and chase.

FADE TIME: Programmable from 0-99.9 seconds or manual crossfade between scenes.

TITLES: Each Scene, Song, and Chase can be titled with a nine character name.

SONG MODE: 50 Programmable songs of up to 50 steps each.
Songs can be automatically linked one after another.
Each song can be named.

CHASER: 50 Programmable chases of up to 32 steps each, with titles. Each step can be a user selected group of channels or a selected preset scene.

CHASE RATE: Adjustable chase step rate from internal, tempo tap, MIDI clock, or audio sync.
Each chase can be named.

Full MIDI implementation for synchronization and archiving (IN, OUT, THRU.)

SOFT PATCH 108 dimmers to any of the 54 control channels.

OUTPUTS:

Dedicated MIDI DIMMER output with three outputs.

DMX 512 output.

ANALOG OUTPUTS 48 or 96 channels (optional).

DISPLAY: 2 X 16 character LCD display for titling, complex control, and HELP messages.

FOOT SWITCH to control selectable functions.

INEXPENSIVE

Smoking Policy

- Students in grades 10-12 may, with their parent's permission, smoke in the designated smoking area outside of the "GRAD" hallway doors. Students who do not have signed permission forms may not loiter or visit in the smoking area.
- Students in grades 7-9 are not allowed to smoke on the school premises or loiter in the smoking area.
- Students participating in extra-curricular events are not allowed to smoke during school sponsored activities or frequent the smoking areas

Student Parking

Students are to park in the designated student parking area. Staff parking is restricted to staff and visitors only. All others will be towed at owners expense. Vehicles are not to be parked in front of the school on either side of the street during school hours.

Snowmobiles are not permitted to be parked in the student parking area or along streets near the school.

Alcohol/Restricted Drugs

- The use of chewing tobacco, alcohol, or illegal drugs are not allowed on school premises, nor should they be used prior to any school activity. Students found under the influence or in the possession of restricted substances during any school activity will have their parents notified and the RCMP may also be contacted. The student may be suspended from school and from further participation in extra-curricular activities.

To Respect Others

- School is a very public place. Students are expected to exercise general courtesy toward their fellow students, staff and visitors.
- Students are to refrain from using profane or abusive language at school.

★ No hats in the gymnasium / theatre ★
 ★ No Food in gymnasium / theatre ★