

Region 5 - Drama Festival Information

Fees

Play Fees - \$250.00 per play
Social Fees - \$20.00 per person
Adult SDA membership - \$50.00
Student Director membership - \$10.00
Student SDA membership - \$6.00

Performances

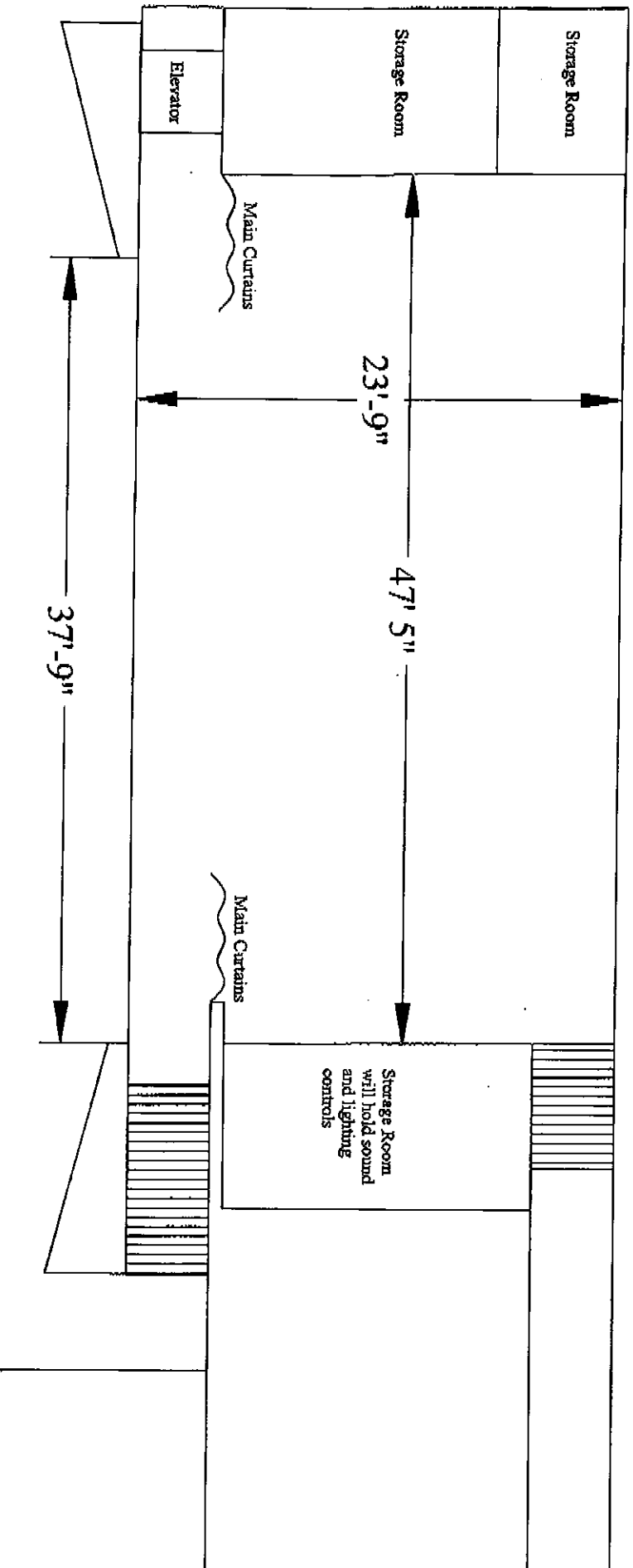
All performances will be held in the school.
The social will be held in the school on Friday, March 26, after last performance.
The awards ceremony and supper will be held after the last adjudication on Saturday, March 27.

Motel/Hotel/B&B and Billeting

Hill Crest Motel - 332-5634
Country Squire Inn - 332-5603
Braeburn Inn - 332-5757
Billeting possible upon request.

Date and Time of Regional Meeting

TBA



This stage has a major drawback of having no backstage. It will have a sound system for music, sound effects, and one microphone. However, it will have only general flood lighting. Finally, this diagram does not show the stage as having wings, but it will have at least one set of wings downstage.