

Region 10 - Drama Festival Information

Fees

- Play Fees - \$250 per play
- Adult SDA membership - \$50.00
- Student Director membership - \$10.00
- Student SDA membership - \$6.00

Performances

All performances will be held at Campbell Collegiate.

Motel/Hotel/B&B and Billeting

1. See website: www.tourismregina.com
2. U of Regina, Residence Services - 585-5454
3. Luther College (on campus) - 585-5333 or 1-800-588-4378

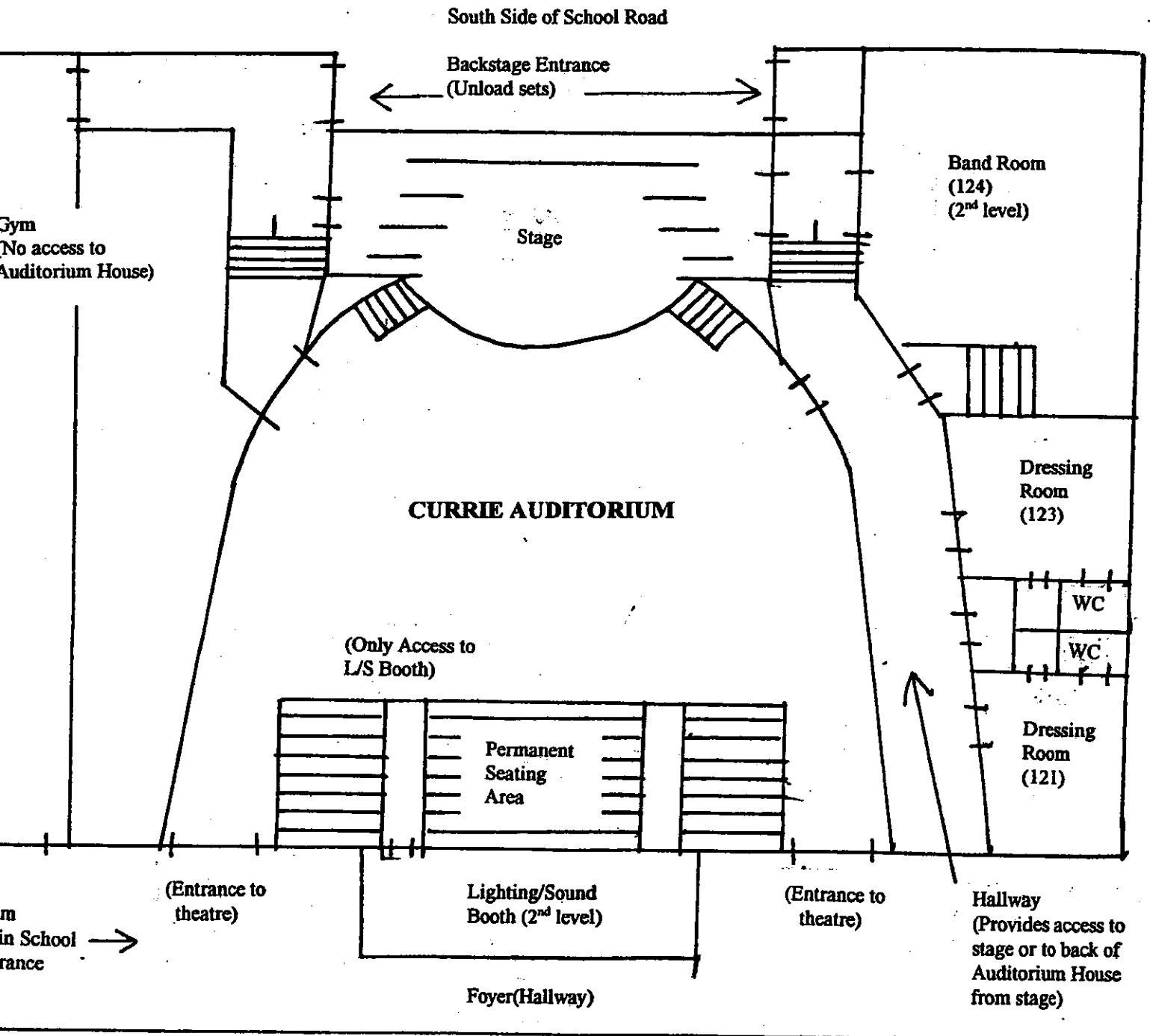
Date and Time of Regional Meeting

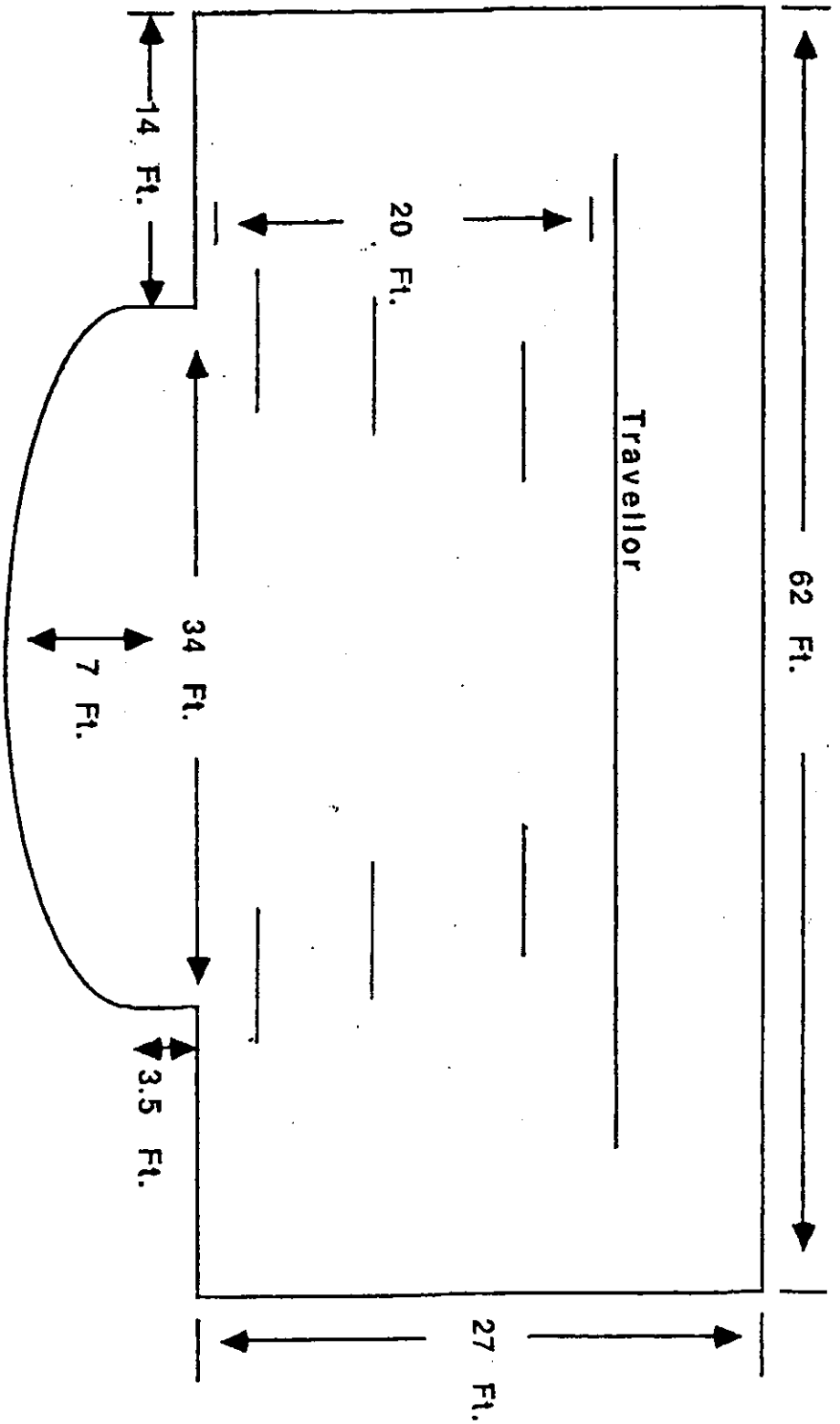
The meeting will be held Saturday, March 27th, following the last production workshop.

Awards

Awards will be given out in the Theatre on March 27th, following the Regional Meeting.

CAMPBELL COLLEGIATE CURRIE AUDITORIUM





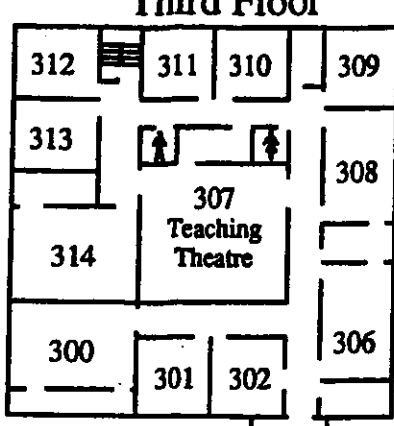
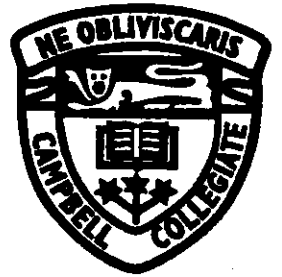
CAMPBELL COLLEGIATE AUDITORIUM
 JUNE 1995

- Set - All set materials must fit through a door 34" by 78".
- Lighting - Campbell lighting can ~~not~~ provide a general lighting with *some special variations* ~~with~~ *minor* variations.
- Sound - We have a ~~portable~~ sound system *with* plus cassette deck / ~~and~~ *and* ~~CD~~ *CD* player.
- Storage - Storage space on and off stage is limited.



Campbell Collegiate

102 Massey Road
Regina, SK S4S 4M9
(306) 791-8380

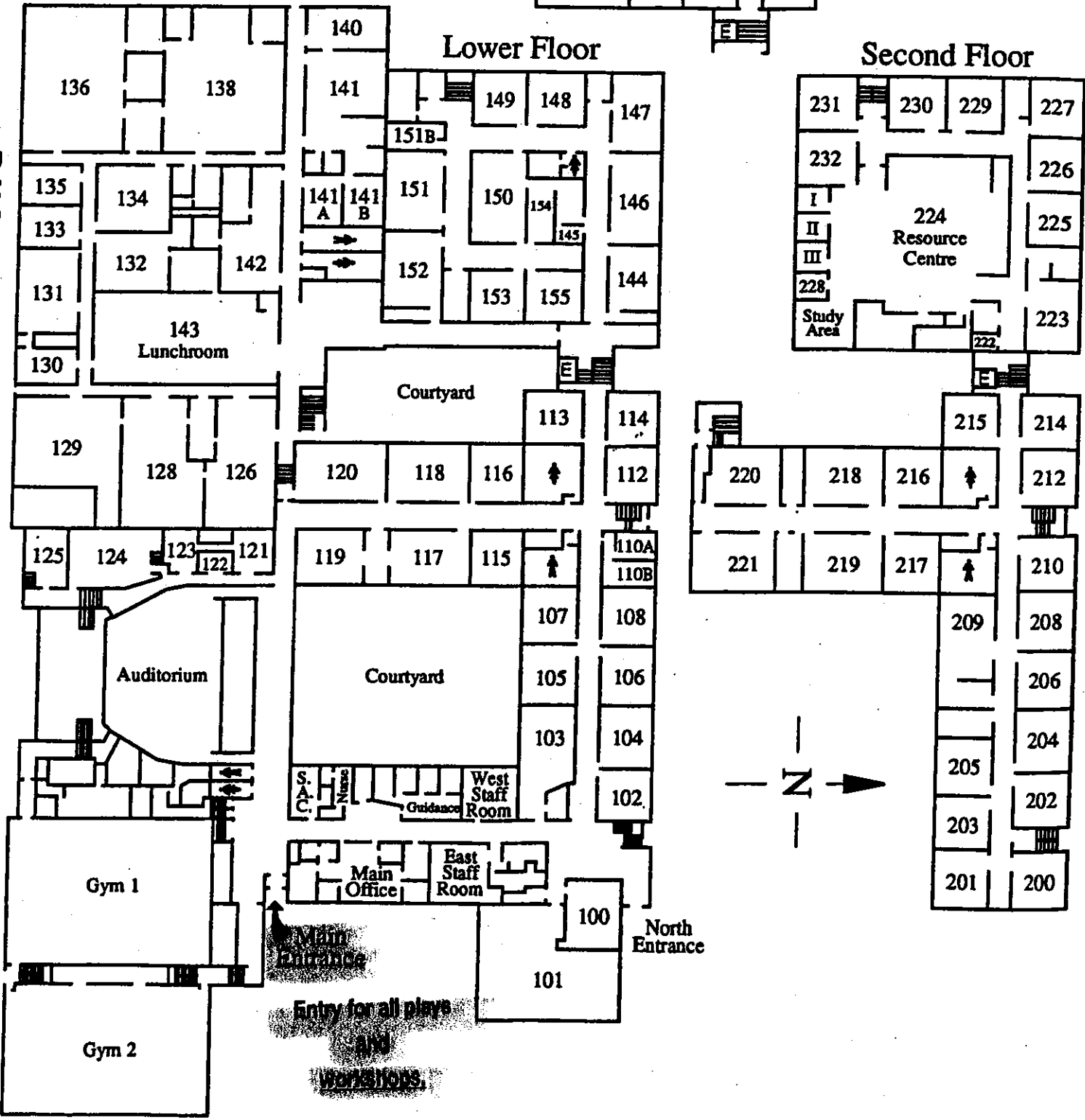


Main Floor

Lower Floor

Second Floor

BUS PARKING AND SET DELIVERY.



**CAMPBELL COLLEGIATE
CURRIE AUDITORIUM**

Please note the more detailed drawing of our stage and auditorium area. Points to note:

1. The lighting will be a general wash and we will try to accommodate requests for specials. The emphasis is on TRY. We will not be able to provide cyclorama lighting on the back wall.
2. There is auditorium house access from stage left only, through the indicated hallway beside the dressing rooms.
3. Access to the lighting booth is from inside the house. Booth lighting and sound are located in the lighting booth.
4. It is possible to cross under the stage, but this should not be necessary because the traveller will be closed for all shows.
5. Sets will be unloaded on the west side of the school. Please have someone check at the main school entrance before your group begins to unload.
6. There are at least four regular plug-ins on the stage. There are marked on the drawing with a small circle.
7. There is microphone plug-in access on stage and a microphone available to the productions.
8. There will be a sound monitor backstage.
9. There will be headset communication between SR and SL and the lighting booth.
10. There will be a cassette player and a CD player available in the lighting booth.

I have tried to include answers to most requests about our facility. Please phone me at school 791-8380 or at home 596-3281 if there are still questions.

Ted Stewart