

Region 8 Drama Festival
March 29-31, 2012
Paradise Hill School
Box 28, Paradise Hill, Sk. S0M 2G0
Phone: 344-2055 Fax: 344-2100

Host Coordinator: Audrey Greves, Paradise Hill School
audrey.greves@nwsd.ca
Shaun Spence
shaun.spence@nwsd.ca

Stage Coordinator: Whitney Greves

Billeting: Limited billeting will be available at the school and possibly in town as well.
Contact Audrey if your group is interested in billeting.

Hotels in the area— (Book early if interested)

Paradise Hill: Smokin Lens 344-2061

St. Walburg: (22 km)

St. Walburg Inn 248-3414

Farmhouse Inn 248-3688

Humming Bird Haven b& b (sleeps 6) 248-3388

Marie's Country Getaway b & b 248-3479

Lloydminster (70 km) numerous hotels

School Rules:

Please acknowledge that classes will be occurring as usual Thursday and Friday. We ask that groups do their best to ensure that the learning environment is not disturbed any more than it has to be.

1. Tobacco and alcohol are prohibited on school premises.
2. Respect school property. Students will be responsible for the repair cost of any willful damage.
3. Our school has a dress code. Please dress appropriately. Please take off hats in the school.
4. Respect and courtesy need to be shown to all persons in the building. Inappropriate and profane language is not accepted.

5. The behavior and whereabouts of all festival participants are the responsibility of their respective chaperones.

Principal Forms: required

SDA Membership: \$50.00/adult \$6.00/student

Festival Fees: \$300/play **Social Fees:** \$20.00/student

Profit Distribution: 50% Best overall production 50% Host school

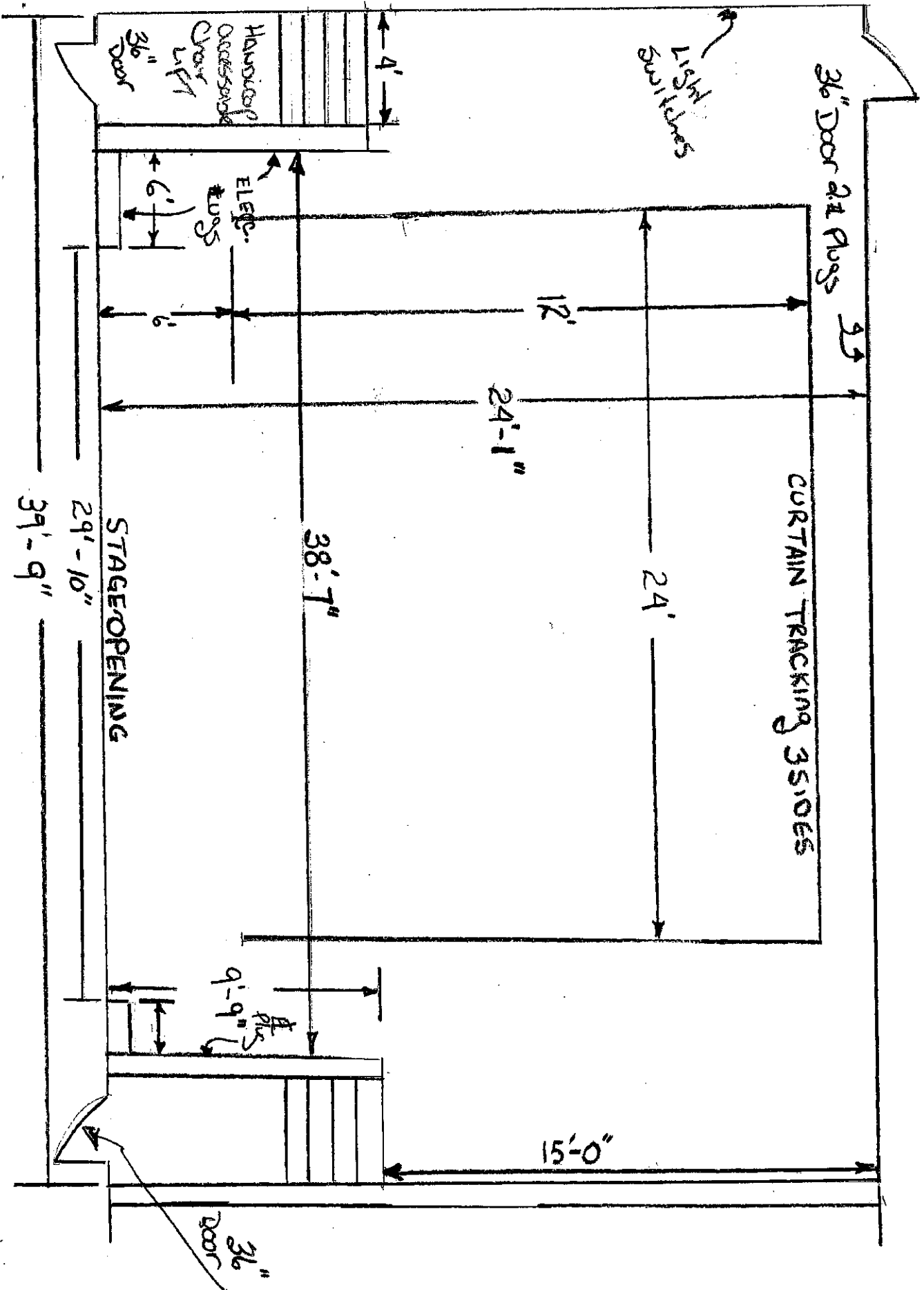
Performances: Paradise Hill School Gym
Admission \$5.00/session

Regional Meeting: March 30 Friday evening following the plays
Held in the school library

Student Social/Dance: Friday evening following the plays

Saturday Banquet following last production workshop
Awards will be given out after banquet.

Paradise Hill Stage



Lights

Our basic light system will be a general wash. If you are interested in specials we will do our best to accommodate but can't guarantee it. We currently have a 16 light system containing 250 watt halogens located on a truss in our gymnasium. Our light board is a Lightronix TL5024 board with 24 channels, programmable chase scenes etc... a quick Google of the model number should get you a copy of the manual. Unfortunately its function is currently somewhat limited due to damage. However we are in the market for a new board and are hoping to have it in place before the festival. Details will follow.

We also have a variety of pot lighting available if need be. This will require specific stands which we would need to develop in advance.

One follow spot is also available if needed.

We have a variety of gel packs for lighting for use in specials.

Sound

Our sound board is a 18 channel Makie . We will ensure we have XLR,1/4 inch, and 1/8 inch inputs for you to plug into, as well as a CD player if needed. We also have 6 working radio headsets for communication with backstage.

Projection

We have had some questions about projection and have a projector mount located above front center stage that will project to the back wall/curtain as well a mechanically controlled screen that can be lowered/raised quite quickly. We also have projector mounts that hang on our light bar if you need to project to other places of the stage. These mounts rotate for a variety of projection angles. 2 projectors are available which can be set up in advance of the festival. I strongly suggest you take advantage of one of the tour dates if you are planning to use projection, as it can be very particular at times.

Stage

We have completed some recent construction on the stage and now have a panel system hung on the curtain tracking, as outlined on the stage plan. There are 5 large panels upstage and 3 smaller panels lining the sides. These side panels will rotate to create multiple entrances and exits as well as creating a variety of stage formats. The back panels can be moved sideways.

If you have any specific requests feel free to send them and we will see what we can provide for you. Keep in mind that we are a small school and our budget reflects this. If you would like to bring equipment let us know and we can help incorporate it into our current system. However remember that any technical equipment brought in must be available to all participating schools as per SDA rules and guidelines. We will not take responsibilities for any damages. We look forward to hosting all of you in March. Do not hesitate to call if you have questions or ideas. We are flexible and can be creative if we need to come up with something.